



# GAT MONTHLY MEMBERSHIP PROGRESS REPORT

Results as of: 11/30/2020

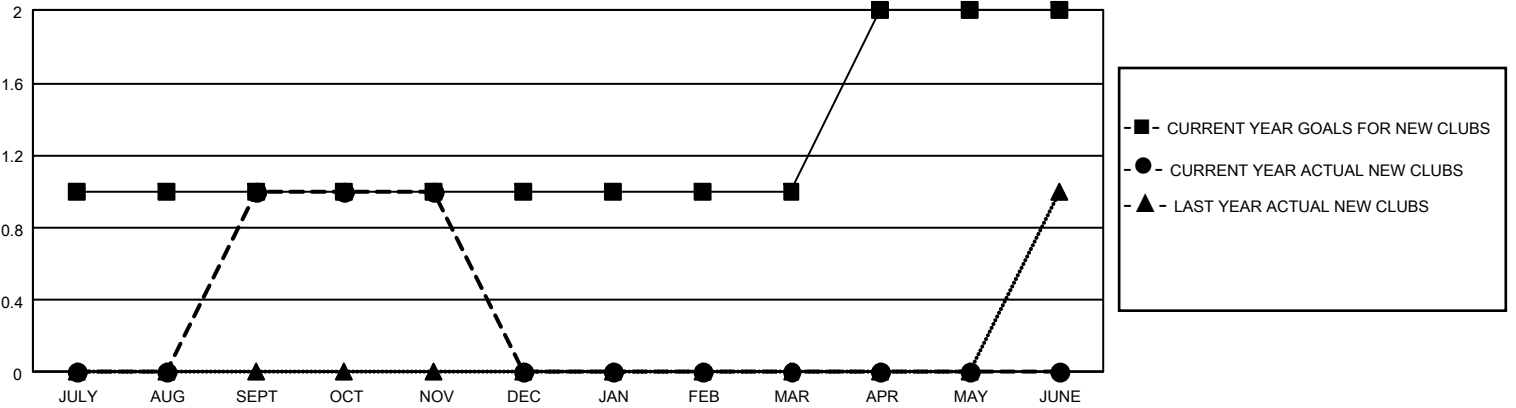
## GAT Constitutional Area 5 - China

REPORT DOES NOT INCLUDE CLUBS IN UNDISTRICTED AREAS.

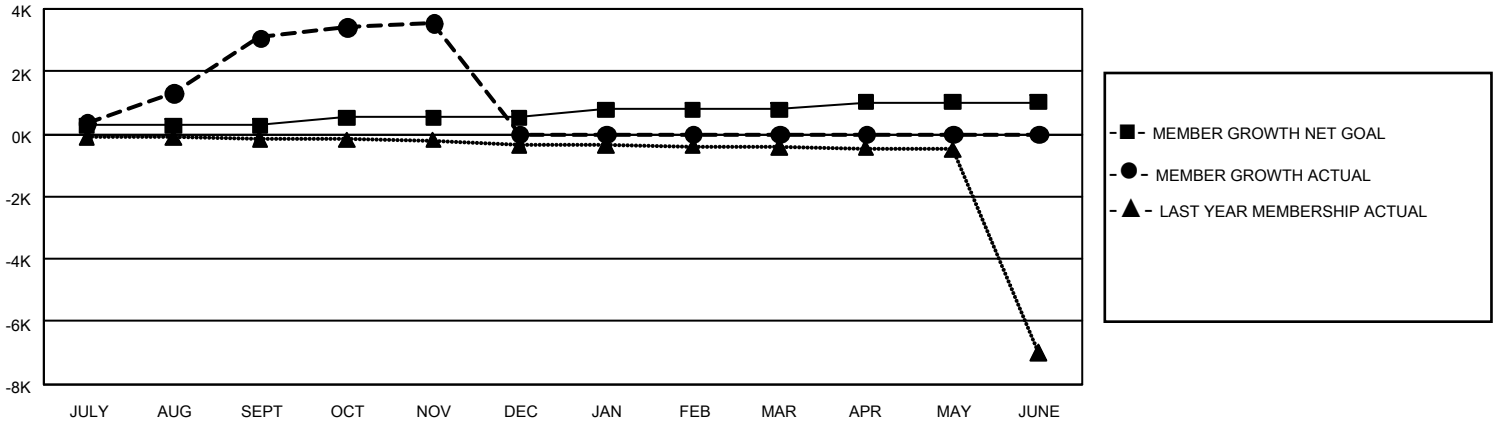
| Clubs                 |               |           |               |
|-----------------------|---------------|-----------|---------------|
| RESULTS FOR 2020-2021 |               |           |               |
| QUARTER               | NEW CLUB GOAL | NEW CLUBS | DROPPED CLUBS |
| JULY/AUG/SEPT         | 3             | 1         | 4             |
| OCT/NOV/DEC           | 0             | 0         | 0             |
| JAN/FEB/MAR           | 0             | 0         | 0             |
| APR/MAY/JUNE          | 3             | 0         | 0             |

| Members               |                        |                      |  |
|-----------------------|------------------------|----------------------|--|
| RESULTS FOR 2020-2021 |                        |                      |  |
| QUARTER               | MEMBER GROWTH NET GOAL | MEMBER GROWTH ACTUAL | DROPPED MEMBERS ACTUAL (including transfers) |
| JULY/AUG/SEPT         | 273                    | 4,039                | 583  |
| OCT/NOV/DEC           | 253                    | 875                  | 215  |
| JAN/FEB/MAR           | 263                    | 0                    | 0  |
| APR/MAY/JUNE          | 223                    | 0                    | 0  |

GOALS AND ACTUAL NEW CLUBS CUMULATIVE



GOALS AND ACTUAL MEMBERS CUMULATIVE



|                        |  |                                 |                 |
|------------------------|--|---------------------------------|-----------------|
| DROPPED CLUBS: 4       | 979 CLUBS OF 1,361 ADDED 1 OR MORE NEW MEMBERS | <u>GENDER DISTRIBUTION</u>      |                 |
| <u>DROPPED MEMBERS</u> |  | MALE                            | 21,506 (62.26%) |
| DECEASED               | 8  | FEMALE                          | 13,039 (37.74%) |
| CLUB CANCELLED         | 0  | TOTAL FAMILY UNIT MEMBERS       | 2,315           |
| OTHER                  | 790  | FAMILY MEMBERS PAYING HALF DUES | 1,191           |
| TOTAL                  | 798  |                                 |                 |

[CLICK HERE FOR CUMULATIVE MEMBERSHIP DATA](#)